

ACE

12 XW

Hydraulic Mobile Crane

12 tonnes Capacity.
Rough terrain and rugged
articulated pick n move crane.

ACE INDIA'S NO. 1
CRANE BRAND



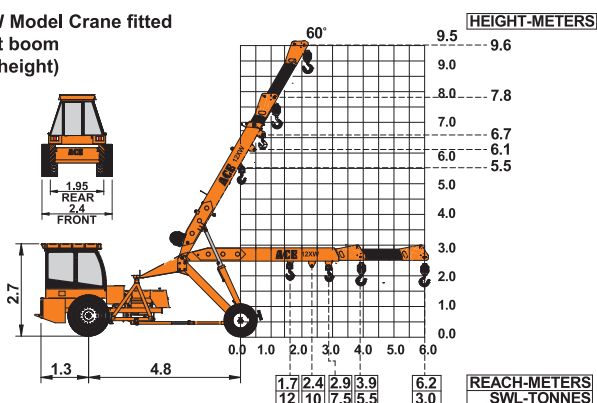
Specifications

12XW

| | |
|---|---|
| LIFTING CAPACITY (Free on wheels) | 12 Tonnes |
| ENGINE | Simpson's S433(I) F1 (CEV BS-III), 4 cylinder, water cooled diesel engine or suitable equivalent engine |
| Rated Power | 48 BHP (36KW) at 2200 RPM. |
| TRANSMISSION | Heavy duty, sliding mesh with 6 forward and 2 reverse speeds with high low range selector. |
| Clutch | Heavy duty, single, dry friction, cerametallic clutch plate with diaphragm type pressure plate. |
| Top Speed | 28 KMPH without load. |
| POWER STEERING | 55° articulation through 2 hydraulic cylinders on either side and turning radius of 6.5 Mtrs. (approx) on outer edge of rear wheels. |
| BRAKES | Pneumatically assisted hydraulic brakes. Front and rear brakes are actuated through a single pedal. Parking brake is Provided. |
| HYDRAULIC SYSTEM | <ul style="list-style-type: none"> ● Gear/Intra vane type main pump. ● Four spools control valve. ● Suction line has 100 mesh size strainer while return line is fitted with 25 micron full flow filter. ● Two double acting lift cylinders, two double acting steering cylinders and one double acting extension cylinder. |

| | |
|---------------------------|--|
| ELECTRICAL SYSTEM | 12V. Negative earth with 35 Amp. alternator and 75 Amp hr. battery. |
| TELESCOPIC BOOM | Two part boom with hydraulically operated extension. |
| Telescoping Time | 12 Seconds. |
| BOOM LUFFING | |
| Range | -5° to + 60° |
| Time | 21 Seconds. |
| HOIST | Winch is driven by hydraulic motor employing 4 falls of 13 mm dia rope and fitted with hook block. |
| Hoist Speed | 50 Mtrs./Min. (Line speed) |
| TYRES | |
| Front | 11.00 x 20 - 16 PR (4 Nos.) |
| Rear | 13.00 x 24 - 12 PR (2 Nos.) |
| SAFETY | <ul style="list-style-type: none"> ● Audio overload indication. ● Hose failure protection. ● Audio over hoisting indication. ● Safety brakes on hoist. ● Cylinder guards. |
| FLUID CAPACITIES | |
| Air Cleaner | 0.75 Ltrs. |
| Engine | 8.00 Ltrs. |
| Fuel Tank | 45.00 Ltrs. |
| Hydraulic Tank | 125.00 Ltrs. |
| Transmission | 48.00 Ltrs. |
| STANDARD EQUIPMENT | <ul style="list-style-type: none"> ● ROPS fully enclosed wide view cabin with rotomould canopy. ● Front tyre protector. ● Front and rear work lights. ● Reflectors & rear view mirror. ● Tool kit. ● Gauges :- <ul style="list-style-type: none"> a) Water temperature. b) Engine oil pressure. c) RPM meter cum hour recorder. d) Air pressure |
| OPTIONAL EQUIPMENT | <ul style="list-style-type: none"> ● Fly jib. (1.25 tonnes max capacity) ● Steering Wheel. ● Air Brakes. ● Boom (height 11.25 mtrs or 12.9 mtrs) ● Spark arrester. ● Fire extinguisher ● City type double driving cabin. ● Over hoisting hydraulic cut off. ● Safe load indicator / LMI. ● Slotted boom |
| OPERATING WEIGHT | 9250 kgs. (for 2 Part) 9800 kgs. (for 3 Part - 11.25 Mtrs.) |

ACE 12XW Model Crane fitted with 2 Part boom (9.6 mtrs. height)



NOTE: All above specifications are pertaining to 12XW model fitted with 2 part boom
Rated loads are on the basis of operation on firm and level surface.



- 1 STEERING WHEEL & CONTROLS**
Steering wheel is provided as an optional feature, which along with ergonomically placed operator console and instrument cluster ensure ease of operation.



- 2 INCREASED VISIBILITY**
Bigger size front windscreen and re-routing of hoses provide much better front visibility.



- 3 ROPS CABIN**
Wide view ROPS cabin for better visibility.



- 4 TRAVEL SPEED**
Travel speed of 28 kmph provides faster intersite movements.



- 5 MAIN FRAME**
Heavy duty & robust construction.



- 6 STEERING CYLINDERS**
880 mm stroke cylinders ensure proper steering even in loose, sandy & rocky terrains.



- 7 GROUND CLEARANCE**
High ground clearance of 400mm for easier rough terrain operation.



- 8 CITY TYPE DOUBLE DRIVING CABIN (OPTIONAL)**



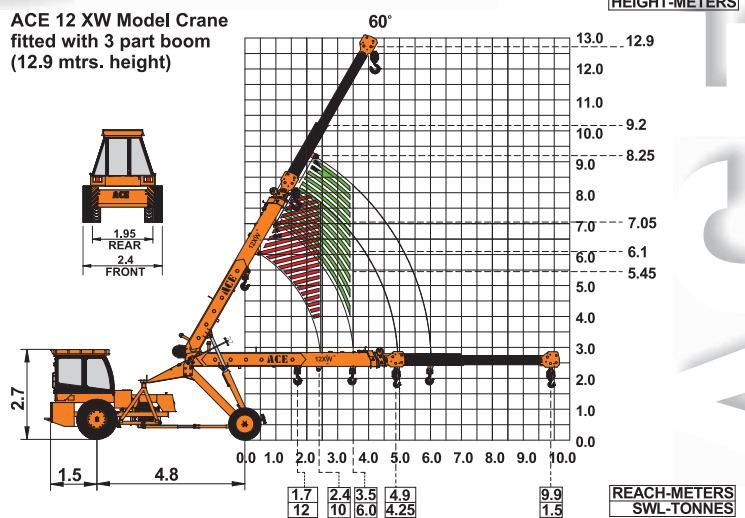
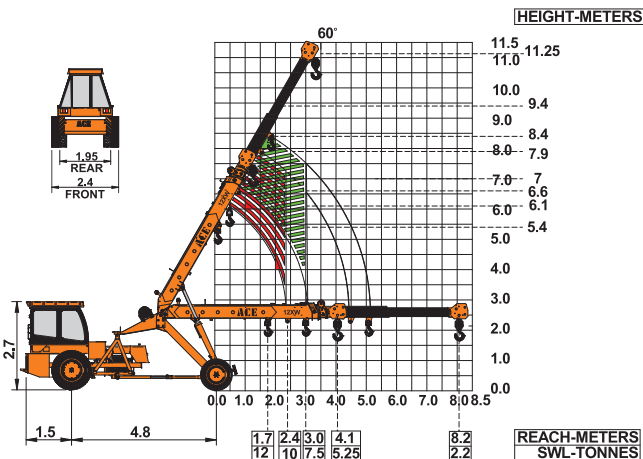
- 9 SELF ADJUSTING HOOK BLOCK**
Provides for safe boom extension and prevents damage of wire rope (optional).



- 10 SLOTTED BOOM**
For easier load positioning (optional)

ACE 12 XW Model Crane fitted with 3 part boom (11.25 mtrs. height)

ACE 12 XW Model Crane fitted with 3 part boom (12.9 mtrs. height)



Advantages

BUILT TO PERFORM



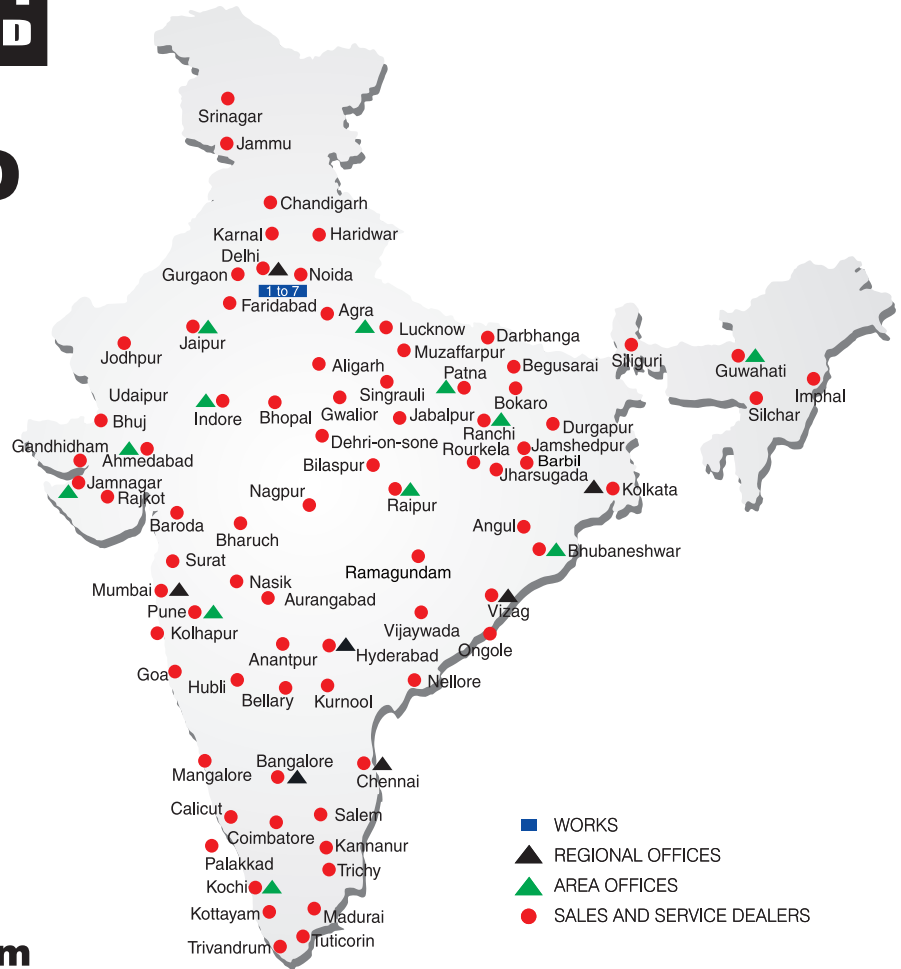
**RELIABLE AND
DEPENDABLE
EFFICIENCY**



**Toll Free Help Line
1800 1800 004**

www.ace-cranes.com

NETWORK



MARKETING H.Q.

4th Floor, Pinnacle
Surajkund, NCR-121009
Ph.: +91-129-4550000
Fax: +91-129-4550022
E-mail: marketing@ace-cranes.com

REGISTERED OFFICE

Dudhola Link Road, Dudhola
Palwal-121102, Haryana
Ph.: +91-1275-280111
Fax: +91-1275-280133
CIN: L74899HR1995PLC053860

MUMBAI OFFICE

31, "Kalpataru Court"
Chembur, Mumbai - 400074
Ph.: +91-22-25206846, 25207070
Fax: +91-22-25207071
E-mail: acemumbai@ace-cranes.com

KOLKATA OFFICE

"Forma Towers" 84-A, Second Floor
AJC Bose Road, Kolkata - 700014
Ph.: +91-9038070630
E-mail: acekolkata@ace-cranes.com

CHENNAI OFFICE

1st Floor, "Alsa Regency", 165
Eldams Road, Alwar Pet
Chennai - 600018
Ph.: +91-44-24314253
Fax: +91-44-24314252
E-mail: acechennai@ace-cranes.com

HERE TO SERVE YOU.

SPARE PARTS & SERVICE

ACE has all India Sales and Service network operating out of all the major cities. These outlets are fully equipped to provide genuine spare parts and services by company trained engineers. These outlets are further supported by company officials based at Delhi, Mumbai, Chennai, Kolkata, Ahmedabad, Surat, Pune, Jaipur, Chandigarh, Ranchi, Raipur, Indore, Bhubneshwar, Lucknow, Jamnagar, Hyderabad, Bangalore, Guwahati, Patna, Vizag & Kochi.



Action Construction Equipment Ltd.

Contact:



ACE reserves the right to alter any specifications without prior notice. Dimensions, weights & capacities mentioned herein are variable by $\pm 5\%$. Accessories if shown are not part of the Standard Equipment.