

# ACE

# 16XW

## Hydraulic Mobile Crane

16 Tonnes Capacity  
Rough terrain and rugged  
articulated pick n move crane.



**INDIA'S NO. 1**  
MOBILE & TOWER CRANE CO.



- Best in Class Stability
- Better Creep Speed
- Heavy Duty & Robust Construction
- Ergonomically Designed Cabin
- Fail Safe Air Brakes

*Nothing beats an **ACE***

## Specifications

## 16XW

<b>LIFTING CAPACITY</b> (Free on wheels)	16 Tonnes	<b>HYDRAULIC SYSTEM</b>	<ul style="list-style-type: none"> <li>● Gear / Intra Vane type Main Pump.</li> <li>● Four spools control valve with built in Relief valve (heavy duty)</li> <li>● Suction line has 100 mesh size Strainer while return line is fitted with 25 micron full flow filter</li> <li>● Two double acting lift cylinders, two double acting steering cylinders and two double acting extension cylinders.</li> </ul>
<b>ENGINE</b>	ACE-A65 (CEV BS-III) 4 cylinder, water cooled diesel engine	<b>TELESCOPIC BOOM</b>	Three part boom with hydraulically operated extensions
Rated Power	61 BHP (45 KW) at 2200 RPM	Telescoping Time	18 Sec.
<b>TRANSMISSION</b>	Heavy duty, sliding mesh with 6 forward and 2 reverse speeds with high low range selector.	<b>BOOM LUFFING</b>	
Clutch	Heavy duty, single, dry friction cerametallic clutch plate with diaphragm type pressure plate.	Range	-3° to + 66°
Top Speed	28 KMPH Without load	Time	20 Sec.
<b>STEERING</b>	Lever operated with 55° articulation on either side and turning radius of 6.5 Mtrs. (approx) on outer rear wheels	<b>HOIST</b>	Winch is driven by hydraulic motor and fitted with hook block employing 4 falls of 13mm dia. Rope.
<b>BRAKES</b>	Air operated S Cam dual brakes on front wheels and air operated disc brakes on rear wheels. Rear wheels brakes are actuated through a single pedal  Parking brake is pneumatically operated fail safe type	Hoist Speed	50 Mtrs./Min. (Line speed)

# ACE advantages



- 1 **ROPS CABIN**  
Wide view ROPS cabin for better visibility.

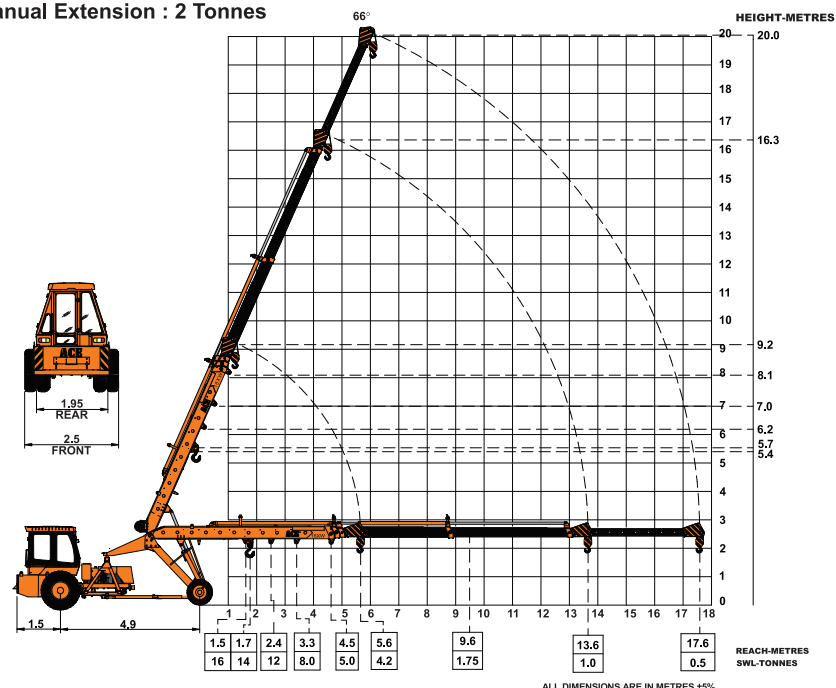


- 2 **GROUND CLEARANCE**  
High ground clearance of 400mm for easier rough terrain operation.

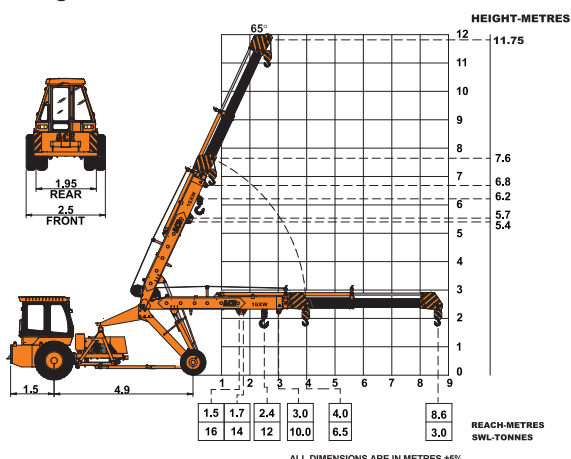


- 3 **MAIN FRAME**  
Heavy duty & robust construction.

### ACE 16XW 4-Part Non Slotted Boom (20 Mtrs. Height) Max. Capacity Manual Extension : 2 Tonnes



### ACE 16XW 3-Part Non Slotted Boom 11.75 Mtrs. Height



ALL DIMENSIONS ARE IN METRES ±5%

ALL DIMENSIONS ARE IN METRES ±5%

## Specifications

## 16XW

### FLUID CAPACITIES

Air Cleaner	0.75 Ltrs.
Engine	8.00 Ltrs.
Fuel Tank	45.00 Ltrs
Hydraulic Tank	125.00 Ltrs.
Transmission	57.00 Ltrs.

### ELECTRICAL SYSTEM

12V, Negative earth with 35 Amp. alternator and 88 Amp hr. battery

### TYRES

Front	12.00 x 20 – 18 PR (4 Nos.)
Rear	14.00 x 25 – 20 PR (2 Nos.)

### SAFETY

- Audio overload indication.
- Hose failure protection.
- Audio over hoisting indication
- Safety brakes on hoist.
- Cylinder guards

### STANDARD EQUIPMENT

- ROPS fully enclosed wide view cabin with rotomould canopy.
- Front tyre protector.
- Front and rear work lights.
- Reflectors & rear view mirror.
- Tool kit.
- Gauges :-
  - a) Water temperature.
  - b) Engine oil pressure.
  - c) RPM meter cum hour recorder
  - d) Air pressure

### OPTIONAL EQUIPMENT

- Fly jib : 2.75 Mtrs., 1.25 Tonnes Capacity
- Steering Wheel in lieu of lever type steering
- Spark arrestor
- Fire Extinguisher
- 4 part boom, 3 part hydraulically actuated and 4th part power extended (20 Mtrs. height)
- Over Hoist hydraulic cutoff
- Safe load indicator / LMI

### OPERATING WEIGHT

14200 Kgs.



- 4 STEERING CYLINDERS  
880 mm stroke cylinders ensure proper steering even in loose, sandy & rocky terrains.



- 5 INCREASED VISIBILITY  
Bigger size front windscreen and re-routing of hoses provide much better front visibility.



- 6 STEERING WHEEL & CONTROLS  
Steering wheel is provided as an optional feature, which along with ergonomically placed operator console and instrument cluster ensures ease of operation.



- 7 LIFT CYLINDERS  
Heavy duty lift cylinders ensure better lifting capacities.

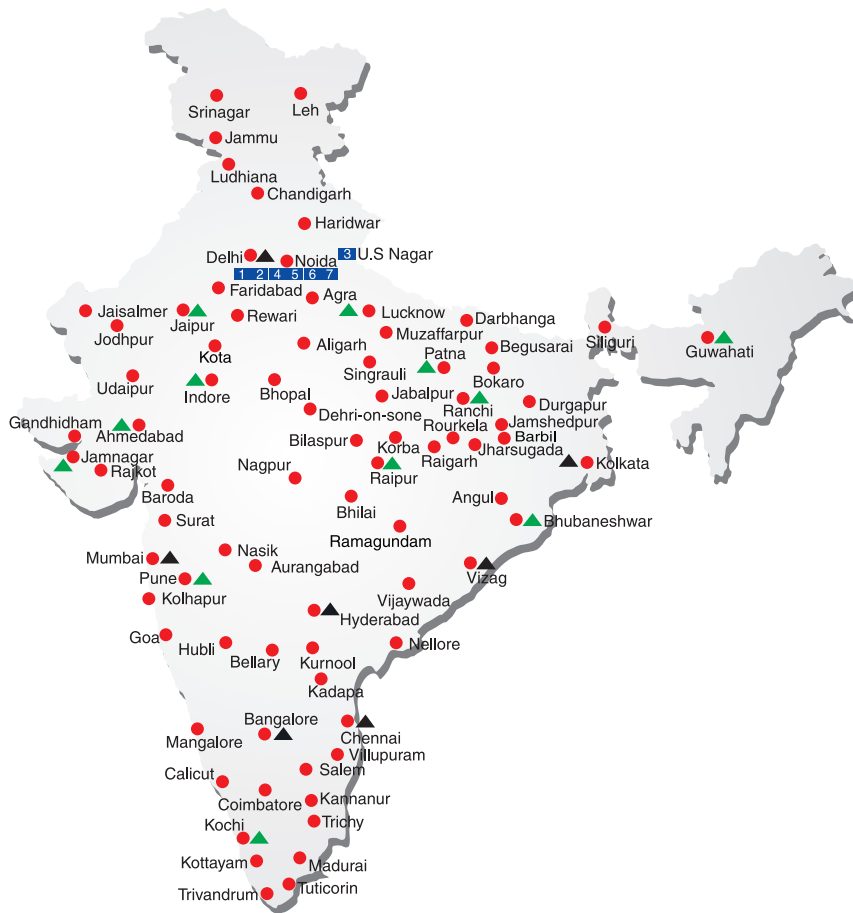


- 8 Air Brakes  
Fully air operated S CAM dual brakes on front wheels





# ALL INDIA NETWORK



## SPARE PARTS & SERVICE

ACE has all India Sales and Service network operating out of all the major cities. These outlets are fully equipped to provide genuine spare parts and services by company trained engineers. These outlets are further supported by company officials based at Delhi, Mumbai, Chennai, Kolkata, Ahmedabad, Surat, Pune, Jaipur, Chandigarh, Ranchi, Raipur, Indore, Bhubneshwar, Lucknow, Jamnagar, Hyderabad, Bangalore, Guwahati, Patna, Vizag & Kochi.

## CUSTOMER CARE

TOLL FREE No

**1800 1800 004**

- WORKS
- ▲ REGIONAL OFFICES
- ▲ AREA OFFICES
- SALES AND SERVICE DEALERS



**Action Construction Equipment Ltd.**

Contact:



ACE reserves the right to alter any specifications without prior notice. Dimensions, weights & capacities mentioned herein are variable by  $\pm 5\%$ . Accessories if shown are not part of the Standard Equipment.

## MARKETING H.Q.

4th Floor, Pinnacle, Surajkund, NCR-121009  
Ph. : +91-129-4550000, Fax : +91-129-4550022  
E-mail: [wh@ace-cranes.com](mailto:wh@ace-cranes.com), [forklifts@ace-cranes.com](mailto:forklifts@ace-cranes.com)

## REGISTERED OFFICE

Dudhola Link Road, Dudhola, Palwal-121102, Haryana  
Ph.: +91-1275-280111, Fax: +91-1275-280133  
CIN : L74899HR1995PLC053860

## MUMBAI OFFICE

31, "Kalpataru Court", Chembur, Mumbai - 400074  
Ph.: +91-22-25206846, 25207070, Fax: +91-22-25207071  
E-mail: [acemumbai@ace-cranes.com](mailto:acemumbai@ace-cranes.com)

## KOLKATA OFFICE

"Forma Towers" 84-A, Second Floor, A/JC Bose Road,  
Kolkata - 700014, Ph.: +91-33-65012050  
E-mail: [acekolkata@ace-cranes.com](mailto:acekolkata@ace-cranes.com)

## CHENNAI OFFICE

1st Floor, "Alsa Regency", 165, Eldams Road,  
Alwar Pet, Chennai - 600018  
Ph.: +91-44-24314253, Fax: +91-44-24314252  
E-mail: [acechennai@ace-cranes.com](mailto:acechennai@ace-cranes.com)

