

ACE

18XW

Hydraulic Mobile Crane

18 Tonnes Capacity
Rough terrain and rugged
articulated pick n move crane.

ACE INDIA'S NO. 1
CRANE BRAND




- Best in Class Stability
- Better Creep Speed
- Heavy Duty & Robust Construction
- Ergonomically Designed Cabin
- Fail Safe Air Brakes

*Nothing beats an **ACE***

Specifications

18XW

LIFTING CAPACITY (Free on wheels)	18 Tonnes		TELESCOPIC BOOM	Three part boom with hydraulically operated extensions	
ENGINE	ACE-A65 (CEV BS-III) 4 cylinder, water cooled diesel engine		Telescoping Time	18 Sec.	
Rated Power	61 BHP (45 KW) at 2200 RPM		BOOM LUFFING	Range Time	-3° to + 66° 20 Sec.
TRANSMISSION	Heavy duty, sliding mesh with 6 forward and 2 reverse speeds with high low range selector.				
Clutch	Heavy duty, single, dry friction cerametallic clutch plate with diaphragm type pressure plate.		HYDRAULIC SYSTEM		<ul style="list-style-type: none">● Gear / Intra Vane type Main Pump.● Four spools control valve with built in Relief valve (heavy duty)● Suction line has 100 mesh size Strainer while return line is fitted with 25 micron full flow filter● Two double acting lift cylinders, two double acting steering cylinders and two double acting extension cylinders.
Top Speed	28 KMPH Without load				
BRAKES	Air operated S Cam dual brakes on front wheels and air operated disc brakes on rear wheels. Rear wheels brakes are actuated through a single pedal Parking brake is pneumatically operated fail safe type				
STEERING	Lever operated with 55° articulation on either side and turning radius of 6.5 Mtrs. (approx) on outer rear wheels	HOIST		Winch is driven by hydraulic motor and fitted with hook block employing 6 falls of 13mm dia. Rope.	
		Hoist Speed		50 Mtrs./Min. (Line speed)	



1 ROPS CABIN
Wide view ROPS cabin for better visibility.



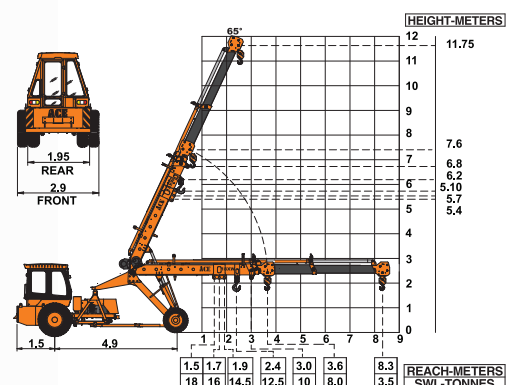
2 GROUND CLEARANCE
High ground clearance of 400mm for easier rough terrain operation.



3 STEERING CYLINDERS
880 mm stroke cylinders ensure proper steering even in loose, sandy & rocky terrains.



ACE 18XW 3-Part Boom
(11.75 Mtrs. Height)



ALL DIMENSIONS ARE IN METRES ±5%

Specifications

18XW

ELECTRICAL SYSTEM	12V, Negative earth with 35 Amp. alternator and 88 Amp hr. battery	STANDARD EQUIPMENT	<ul style="list-style-type: none"> ● ROPS fully enclosed wide view cabin with rotomould canopy. ● Front tyre protector. ● Front and rear work lights. ● Reflectors & rear view mirror. ● Tool kit. ● Gauges :- <ul style="list-style-type: none"> a) Water temperature. b) Engine oil pressure. c) RPM meter cum hour recorder d) Air pressure
TYRES	Front 12.00 x 20 – 18 PR (4 Nos.) Rear 14.00 x 25 – 20 PR (2 Nos.)	OPTIONAL EQUIPMENT	<ul style="list-style-type: none"> ● Fly jib : 2.75 Mtrs., 1.25 Tonnes Capacity ● Steering Wheel in lieu of lever type steering ● Spark arrestor ● Fire Extinguisher ● 4 part boom - 20 Mtrs. height ● 5 part boom - 22 Mtrs. height ● Over Hoist hydraulic cutoff ● Safe load indicator / LMI
FLUID CAPACITIES	Air Cleaner 0.75 Ltrs. Engine 8.00 Ltrs. Fuel Tank 50.00 Ltrs. Hydraulic Tank 125.00 Ltrs. Transmission 57.00 Ltrs.	OPERATING WEIGHT	15330 Kgs.
SAFETY	<ul style="list-style-type: none"> ● Audio overload indication. ● Hose failure protection. ● Audio over hoisting indication ● Safety brakes on hoist. ● Cylinder guards 		

ACE advantages



- 4 LIFT CYLINDERS**
Heavy duty lift cylinders ensure better lifting capacities.

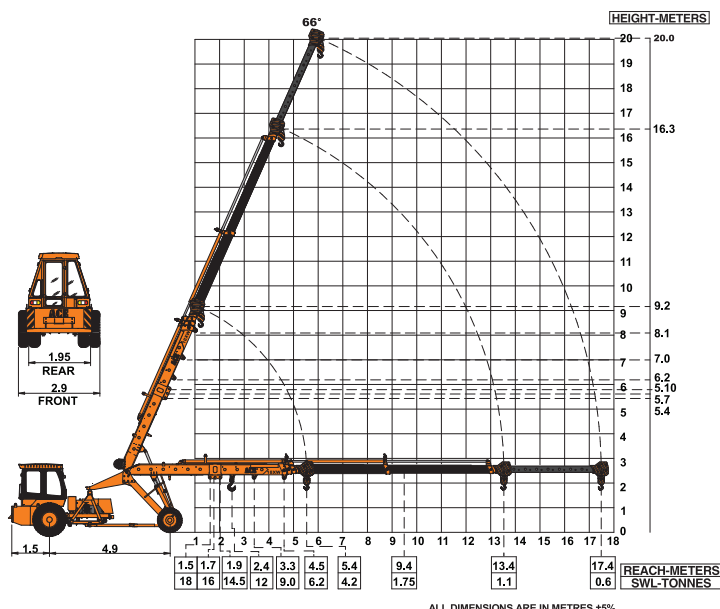


- 5 AIR BRAKES**
Fully air operated S CAM dual brakes on front wheels

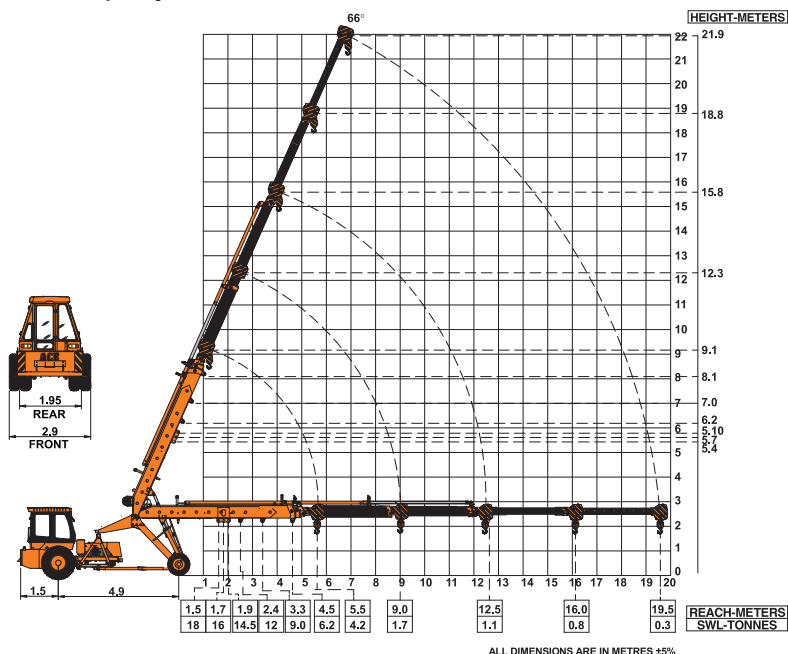


- 6 STEERING WHEEL & CONTROLS**
Steering wheel is provided as an optional feature, which along with ergonomically placed operator console and instrument cluster ensures ease of operation.

ACE 18XW 4-Part Boom (20 Mtrs. Height)
Max. Capacity Manual Extension : 2 Tonnes



ACE 18XW 5-Part Boom (22 Mtrs. Height)
Max. Capacity Manual Extension : 2 Tonnes

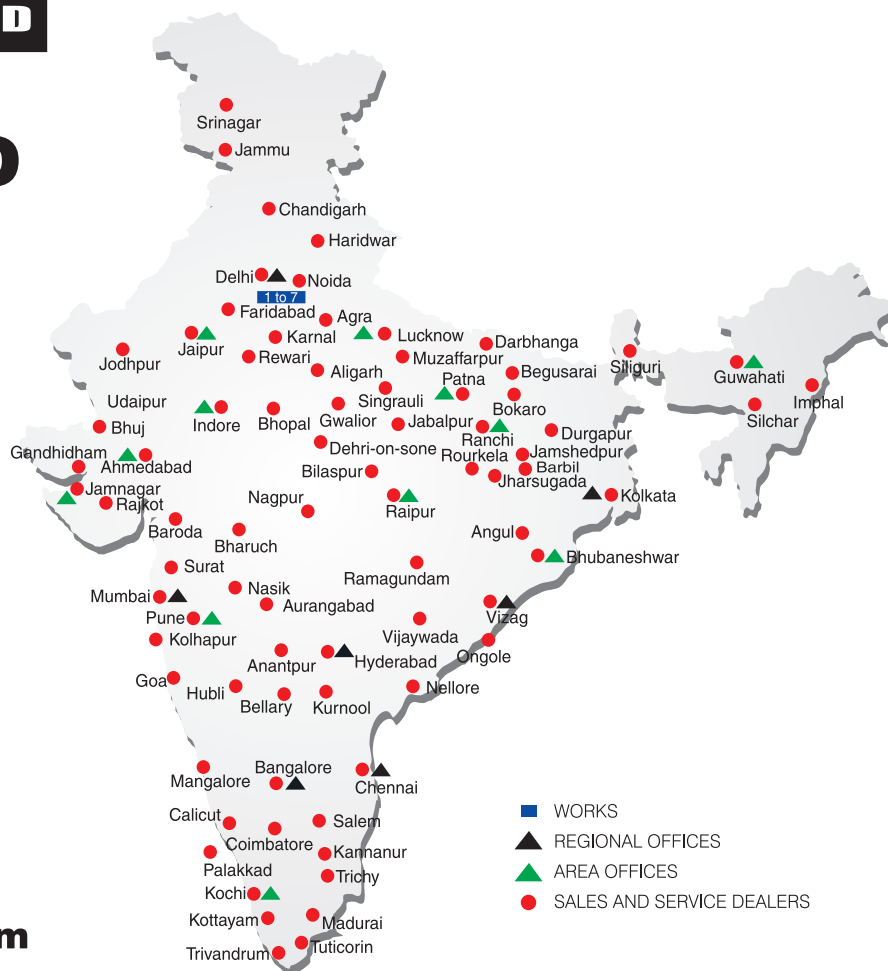


BUILT TO PERFORM



**RELIABLE AND
DEPENDABLE
EFFICIENCY**

NETWORK



**Toll Free Help Line
1800 1800 004**

www.ace-cranes.com

MARKETING H.Q.

4th Floor, Pinnacle
Surajkund, NCR-121009
Ph.: +91-129-4550000
Fax: +91-129-4550022
E-mail: marketing@ace-cranes.com

REGISTERED OFFICE

Dudhola Link Road, Dudhola
Palwal-121102, Haryana
Ph.: +91-1275-280111
Fax: +91-1275-280133
CIN : L74899HR1995PLC053860

MUMBAI OFFICE

31, "Kalpataru Court"
Chembur, Mumbai - 400074
Ph.: +91-22-25206846, 25207070
Fax: +91-22-25207071
E-mail: acemumbai@ace-cranes.com

KOLKATA OFFICE

"Forma Towers" 84-A, Second Floor
AJC Bose Road, Kolkata - 700014
Ph.: +91-9038070630
E-mail: acekolkata@ace-cranes.com

CHENNAI OFFICE

1st Floor, "Alsa Regency", 165
Eldams Road, Alwar Pet
Chennai - 600018
Ph.: +91-44-24314253
Fax: +91-44-24314252
E-mail: acechennai@ace-cranes.com

HERE TO SERVE YOU.

SPARE PARTS & SERVICE

ACE has all India Sales and Service network operating out of all the major cities. These outlets are fully equipped to provide genuine spare parts and services by company trained engineers. These outlets are further supported by company officials based at Delhi, Mumbai, Chennai, Kolkatta, Ahmedabad, Surat, Pune, Jaipur, Chandigarh, Ranchi, Raipur, Indore, Bhubneshwar, Lucknow, Jamnagar, Hyderabad, Bangalore, Guwahati, Patna, Vizag & Kochi.



Action Construction Equipment Ltd.

Contact:

ACE reserves the right to alter any specifications without prior notice. Dimensions, weights & capacities mentioned herein are variable by $\pm 5\%$. Accessories if shown are not part of the Standard Equipment.



18XW05/19