

ACE FX150

Nextgen Hydraulic Crane Capacity : 15 tonnes

Rough terrain and rugged
articulated nextgen pick n move crane.



- Front mounted ergonomically designed Cabin
- Improved kinematics with low Center of Gravity
- Slotted boom
- Self Adjusting hook block
- Fail safe air brakes
- Better creep speed



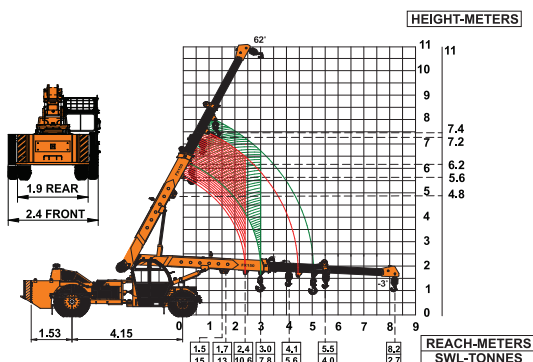
Specifications

FX150

LIFTING CAPACITY (Free on wheels)	15 Tonnes
ENGINE	Tata 4 cylinder, water cooled diesel engine or equivalent engine
Rated Power	49 bhp at 2200 RPM
STEERING	Full power orbitrol with twin hydraulic double acting cylinders and 45° articulation on either side
Turning Radius	6.5 mtrs (approx)
TRANSMISSION	Heavy duty TATA synchromesh transmission with 8 forward and 2 reverse speeds and hi-low drive selector for creep speed
	Front axle is rigidly mounted on the chassis and rear drive axle is mounted with leaf springs
	Heavy duty hydraulic clutch
Top Speed	32 KMPH on even metaled road (without load)
Gradeability	40% (unladen)
HYDRAULIC SYSTEM	<ul style="list-style-type: none"> ● Gear/Intra Vane type Main Pump ● Three spools control valve with built in Relief valve ● Suction line has 100 mesh size strainer while return line is fitted with 25 micron full flow filter ● Two double acting lift cylinders, two double acting steering cylinders and one double acting extension cylinder
BRAKES	<ul style="list-style-type: none"> ● Dual Circuit Brakes ● Fully air actuated brakes on rear wheels and pneumatically assisted hydraulic brakes are provided on front wheels ● Parking brake is pneumatically operated, fail safe type
ELECTRICAL SYSTEM	12V. Negative earth with 35 amp. Alternator & 75 amp. hr. battery
TELESCOPIC BOOM	Three part slotted boom with hydraulically operated synchronized extensions
TYRES	11.00 x 20 - 16 PR (4 Nos.) 14.00 x 25 - 20 PR (2 Nos.)

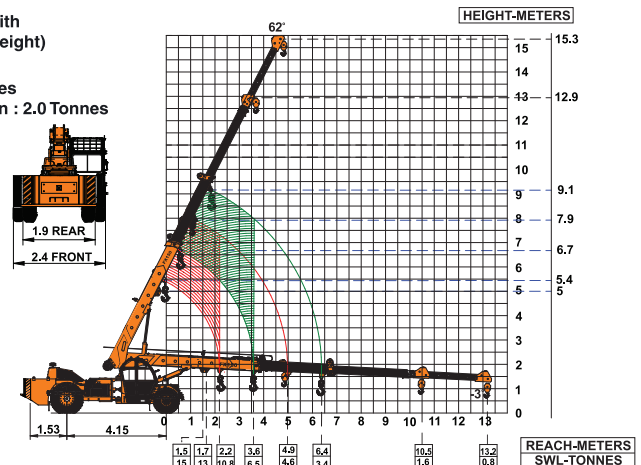
Wheel base	4150 mm
Wheel track	Front 1900 mm Rear 1800 mm
HOIST	Winch is driven by hydraulic motor and fitted with rope tensioner. Hoisting is provided through self adjusting hook block employing 4 falls of 13 mm dia rope
Hoist Speed	50 Mtrs./Min. (Line speed)
BOOM LUFFING Range	-3° to + 62°
SAFETY	<ul style="list-style-type: none"> ● Hose failure protection ● Audio over hoisting indication ● Safety brakes on hoist ● Self adjusting hook block ● Front and rear wheel guards
STANDARD EQUIPMENT	<ul style="list-style-type: none"> ● Front mounted fully enclosed wide view cabin ● Rear View Camera ● Front and rear work lights ● Beacon rotating light ● Reflectors & Rear View Mirrors ● Tool Kit ● Cabin Fan Gauges : a) Water temperature b) Engine oil pressure c) Fuel Gauge d) RPM meter cum hour recorder e) Air Pressure Gauge f) Speedometer
OPTIONAL EQUIPMENT	<ul style="list-style-type: none"> ● Fly jib : 2.7 Mtrs., 1.25 Tonnes Capacity ● Spark arrestor ● Safe load indicator/ LMI ● Over Hoist hydraulic cutoff ● Fire extinguisher ● Front outriggers ● Drag Winch ● Front and side Proximity Sensors ● Cabin front glass protector ● Helper/Slinger seat ● 4 part slotted boom, 3 part hydraulically ● Variant Model: Fitted with Tata 76 bhp engine
OPERATING WEIGHT	
Front Axle	5755 Kgs.
Rear Axle	9465 Kgs.
Total Weight	15220 Kgs.

ACE FX150 Model Crane fitted with 3 part slotted boom (11 Mtrs. height)



ACE FX150 Model Crane fitted with 4 part slotted boom (15.3 Mtrs. height) (4th part power extended)

- Max. capacity flyjib : 1.25 tonnes
- Max capacity manual extension : 2.0 Tonnes



NOTE: • All above specifications are pertaining to FX150 model fitted with 11 Mtrs. boom.
• Rated loads are on the basis of operation on firm and level surface.



- 1 CABIN**
Front mounted, ergonomically designed Cabin for better visibility and driveability.



- 2 OPTIMIZED KINEMATICS AND LOW C.G.**
FX150 crane has been designed with low Center of Gravity (C.G.) providing best in class stability and operational safety



- 3 EASY MAINTENANCE**
The engine is easily accessible for daily maintenance checks including battery, air filter, oil level and cooling system



- 4 SLOTTED BOOM**
Facilitates easier load positioning and is fitted with self adjusting hook block.



- 5 VARIANT MODEL**
Fitted with heavy duty Tata 76 bhp Turbo charged engine for road speeds of upto 40 kmph.



- 6 INCREASED VISIBILITY**
Bigger size front windscreen provided for better visibility and safe operation.



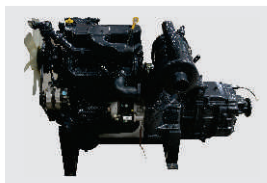
- 7 GROUND CLEARANCE**
Ground clearance of 350mm for easier rough terrain operation.



- 8 HYDRAULIC & FUEL TANK**
Easy approach and High capacity.



- 9 STEERING WHEEL & CONTROLS**
Steering wheel is provided as standard feature, which along with ergonomically placed operator console and instrument cluster ensures ease of operation.



- 10 ENGINE**
Best in class Tata-4 Cylinder engine having nationwide service support and spare parts availability.



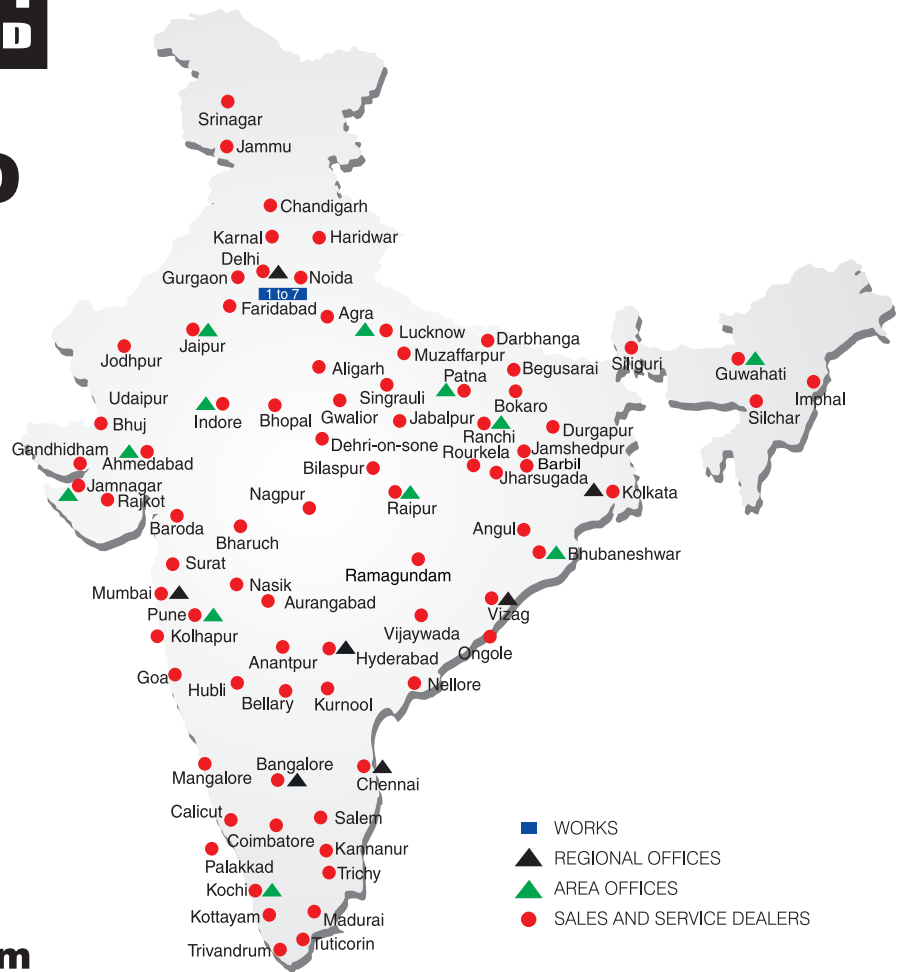
- 11 FRONT OUTRIGGERS**
Optional Front Outriggers for added safety during high lift operations.

BUILT TO PERFORM



**RELIABLE AND
DEPENDABLE
EFFICIENCY**

NETWORK



www.ace-cranes.com

MARKETING H.Q.

4th Floor, Pinnacle
Surajkund, NCR-121009
Ph. : +91-129-4550000
Fax : +91-129-4550022
E-mail: marketing@ace-cranes.com

REGISTERED OFFICE

Dudhola Link Road, Dudhola
Palwal-121102, Haryana
Ph.: +91-1275-280111
Fax: +91-1275-280133
CIN : L74899HR1995PLC053860

MUMBAI OFFICE

31, "Kalpataru Court"
Chembur, Mumbai - 400074
Ph.: +91-22-25206846, 25207070
Fax: +91-22-25207071
E-mail: acemumbai@ace-cranes.com

KOLKATA OFFICE

"Forma Towers" 84-A, Second Floor
AJC Bose Road, Kolkata - 700014
Ph.: +91-9038070630
E-mail: acekolkata@ace-cranes.com

CHENNAI OFFICE

1st Floor, "Alsa Regency", 165
Eldams Road, Alwar Pet
Chennai - 600018
Ph.: +91-44-24314253
Fax: +91-44-24314252
E-mail: acechennai@ace-cranes.com

HERE TO SERVE YOU.

SPARE PARTS & SERVICE

ACE has all India Sales and Service network operating out of all the major cities. These outlets are fully equipped to provide genuine spare parts and services by company trained engineers. These outlets are further supported by company officials based at Delhi, Mumbai, Chennai, Kolkata, Ahmedabad, Surat, Pune, Jaipur, Chandigarh, Ranchi, Raipur, Indore, Bhubneshwar, Lucknow, Jamnagar, Hyderabad, Bangalore, Guwahati, Patna, Vizag & Kochi.



Action Construction Equipment Ltd.

Contact:



ACE reserves the right to alter any specifications without prior notice. Dimensions, weights & capacities mentioned herein are variable by $\pm 5\%$. Accessories if shown are not part of the Standard Equipment.