

# ACE

# FX230

## NextGen Hydraulic Crane Capacity : 23 tonnes

Rough terrain and rugged articulated new generation pick n move crane.



- Front outriggers
- Heavy duty drive line
- Front mounted ergonomically designed Cabin
- Improved kinematics with low Center of Gravity
- Slotted boom
- Self Adjusting hook block
- Fail safe air brakes

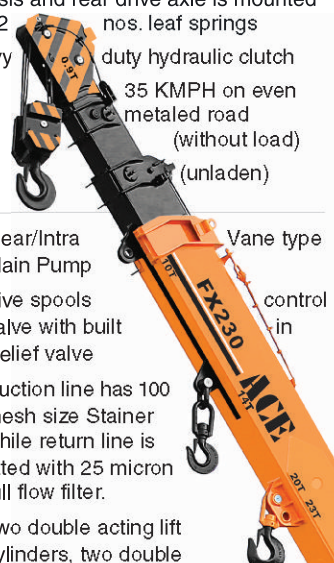
*Nothing beats an **ACE***



# Specifications

# FX230

<b>LIFTING CAPACITY</b> (Free on wheels)	23 Tonnes
<b>ENGINE</b>	Ashok Leyland, 4 cylinder, water cooled diesel engine or equivalent TATA engine
Rated Power	101 PS at 2200 RPM
<b>STEERING</b>	Full power orbitrol with twin hydraulic double acting cylinders and 40° articulation on either side.
Turning Radius	8.2 Meters (approx)
<b>TRANSMISSION</b>	Heavy duty, Synchromesh with 8 forward and 2 reverse speeds and hi-low drive selector for creep speed
Axles	Front axle is rigidly mounted on the chassis and rear drive axle is mounted with 2 nos. leaf springs
Clutch	Heavy duty hydraulic clutch
Top Speed	35 KMPH on even metaled road (without load)
Gradeability	40% (unladen)
<b>HYDRAULIC SYSTEM</b>	<ul style="list-style-type: none"> <li>● Gear/Intra Main Pump</li> <li>● Five spools valve with built Relief valve</li> <li>● Suction line has 100 mesh size Stainer while return line is fitted with 25 micron full flow filter.</li> <li>● Two double acting lift cylinders, two double acting steering cylinder and one double acting extension cylinder</li> </ul>
<b>BRAKES</b>	<ul style="list-style-type: none"> <li>● Dual Circuit Brakes</li> <li>● Fully air actuated brakes on front and rear wheels</li> <li>● Parking brake is pneumatically operated, fail safe type.</li> </ul>
<b>ELECTRICAL SYSTEM</b>	24 V Negative earth
<b>TELESCOPIC BOOM</b>	Three part slotted boom with hydraulically operated synchronized extensions (11.6 mtrs. height)
<b>TYRES</b>	
Front	12.00 x 24 - 20 PR (4 Nos.)
Rear	14.00 x 25 - 20 PR (2 Nos.)
Wheel base	5100 mm
Wheel track	Front 1900 mm Rear 1770 mm



<b>HOIST</b>	Winch is driven by hydraulic motor and fitted with rope tensioner. Hoisting is provided through self adjusting hook block employing 6 falls of 13 mm dia rope
Hoist Speed	50 Mtrs./Min. (Line speed)
<b>BOOM LUFFING</b>	
Range	-3° to + 62°
<b>SAFETY</b>	<ul style="list-style-type: none"> <li>● Hose failure protection</li> <li>● Audio over hoisting indication</li> <li>● Safety brakes on hoist</li> <li>● Self adjusting hook block</li> <li>● Front and rear wheel guards</li> </ul>
<b>STANDARD EQUIPMENT</b>	<ul style="list-style-type: none"> <li>● Front Outriggers</li> <li>● Front mounted fully enclosed wide view cabin</li> <li>● Rear View Camera</li> <li>● Front and rear work lights</li> <li>● Reflectors &amp; Rear View Mirrors</li> <li>● Tool Kit</li> <li>● Cabin Fan</li> <li>● Wiper Motor</li> <li>● Gauges: <ul style="list-style-type: none"> <li>a) Water temperature</li> <li>b) Engine oil pressure</li> <li>c) Fuel Gauge</li> <li>d) RPM meter cum hour recorder</li> <li>e) Air Pressure Gauge</li> <li>f) Speedometer</li> </ul> </li> <li>● Beacon rotating light</li> </ul>
<b>OPTIONAL EQUIPMENT</b>	<ul style="list-style-type: none"> <li>● Fly Jib (1.25 Tonnes Max Capacity)</li> <li>● Spark arrester</li> <li>● Safe load indicator/LMI</li> <li>● Over Hoist hydraulic cutoff</li> <li>● Fire Extinguisher</li> <li>● Drag winch</li> <li>● Front and side Proximity Sensors</li> <li>● Cabin Front Glass Protector</li> <li>● 4 part slotted boom, 2 parts hydraulically operated &amp; synchronized and 4th part power extended (18.3 mtrs. height)</li> <li>● Helper/Slinger Seat</li> </ul>
<b>OPTIMIZED KINEMATICS AND LOW C.G.</b>	
FX 230 crane has been evolved/designed keeping in mind operational safety parameters with low Center of Gravity (C.G.) providing best in class stability.	
<b>OPERATING WEIGHT</b>	
Front Axle	9725 Kgs.
Rear Axle	10200 Kgs.
Total Weight	19925 Kgs.



**1 GROUND CLEARANCE**  
Ground clearance of 300mm for easier rough terrain operation.



**2 STEERING WHEEL & CONTROLS**  
Steering wheel is provided as a standard feature, which along with ergonomically placed operator console and instrument cluster ensures ease of operation.



**3 SLOTTED BOOM**  
Facilitates easier load positioning and fitted with self adjusting hook block.



**4 EASY MAINTENANCE**  
The engine is easily accessible for daily maintenance checks including battery, air filter, oil level dipstick and cooling system.



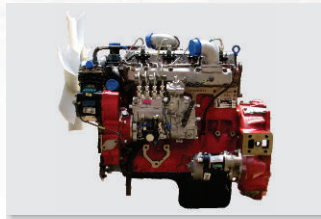
**5 INCREASED VISIBILITY**  
Bigger size front windscreen provided for better visibility and safe operation.



**6 HYDRAULIC & FUEL TANK**  
Easy approach and adequate capacities



**7 CABIN**  
Front mounted, ergonomically designed Cabin for better visibility and driveability.



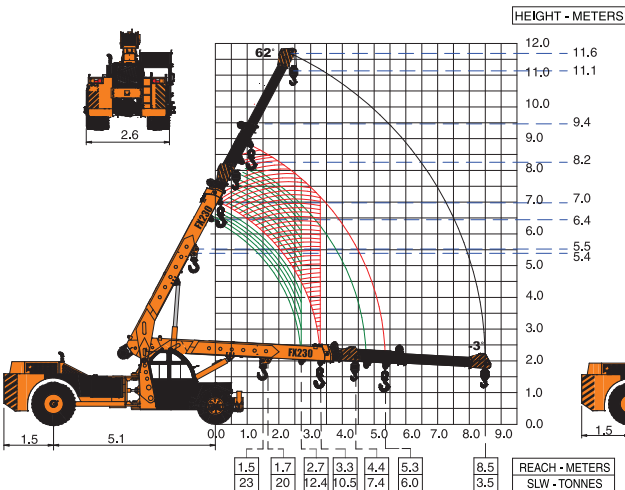
**8 ENGINE**  
Best in class Ashok Leyland/TATA 4 Cylinder engine having nationwide service support and spare parts availability.



**9 OUT TRIGGERS**  
Front outriggers are provided as standard fitment for added safety during high lift operations.

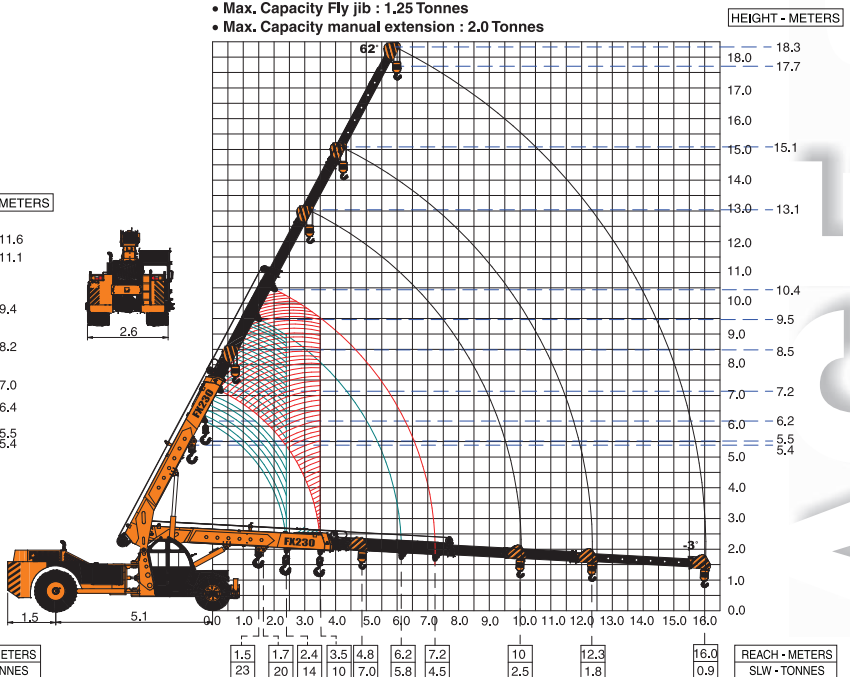
ACE advantages

**ACE FX230 Crane fitted with 3 part slotted boom (11.6 Mtrs. height)**



**ACE FX230 Crane fitted with 4 part slotted boom (18.3 Mtrs. height)**

- Max. Capacity Fly jib : 1.25 Tonnes
- Max. Capacity manual extension : 2.0 Tonnes



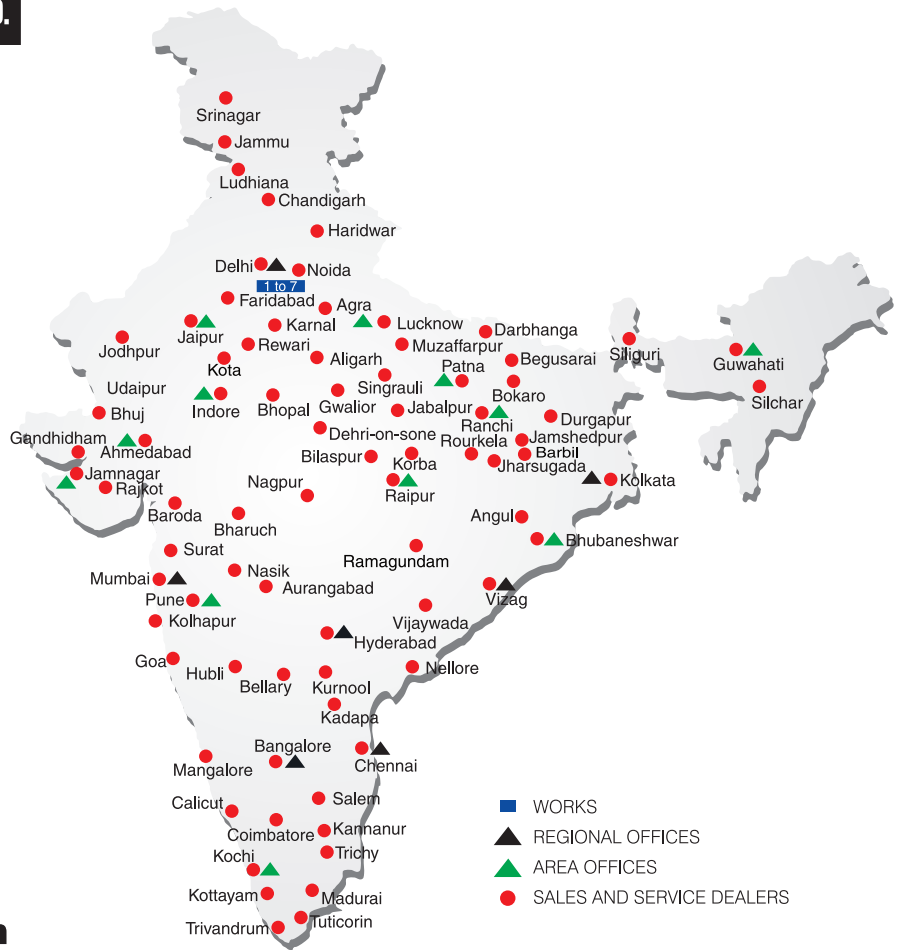
NOTE: • All the above specifications are pertaining to FX230 model fitted with 11.6 Mtrs. boom. • Rated loads are on the basis of operation on firm and level surface.

# BUILT TO PERFORM



**RELIABLE AND  
DEPENDABLE  
EFFICIENCY**

## NETWORK



[www.ace-cranes.com](http://www.ace-cranes.com)

### MARKETING H.Q.

4th Floor, Pinnacle  
Surajkund, NCR-121009  
Ph.: +91-129-4550000  
Fax: +91-129-4550022  
E-mail: [marketing@ace-cranes.com](mailto:marketing@ace-cranes.com)

### REGISTERED OFFICE

Dudhola Link Road, Dudhola  
Palwal-121102, Haryana  
Ph.: +91-1275-280111  
Fax: +91-1275-280133  
CIN : L74899HR1995PLC053860

### MUMBAI OFFICE

31, "Kalpataru Court"  
Chembur, Mumbai - 400074  
Ph.: +91-22-25206846, 25207070  
Fax: +91-22-25207071  
E-mail: [acemumbai@ace-cranes.com](mailto:acemumbai@ace-cranes.com)

### KOLKATA OFFICE

"Forma Towers" 84-A, Second Floor  
AJC Bose Road, Kolkata - 700014  
Ph.: +91-9038070630  
E-mail: [acekolkata@ace-cranes.com](mailto:acekolkata@ace-cranes.com)

### CHENNAI OFFICE

1st Floor, "Alsa Regency", 165  
Eldams Road, Alwar Pet  
Chennai - 600018  
Ph.: +91-44-24314253  
Fax: +91-44-24314252  
E-mail: [acechennai@ace-cranes.com](mailto:acechennai@ace-cranes.com)

## HERE TO SERVE YOU.

### SPARE PARTS & SERVICE

ACE has all India Sales and Service network operating out of all the major cities. These outlets are fully equipped to provide genuine spare parts and services by company trained engineers. These outlets are further supported by company officials based at Delhi, Mumbai, Chennai, Kolkatta, Ahmedabad, Surat, Pune, Jaipur, Chandigarh, Ranchi, Raipur, Indore, Bhubneshwar, Lucknow, Jamnagar, Hyderabad, Bangalore, Guwahati, Patna, Vizag & Kochi.



**Action Construction Equipment Ltd.**

Contact:



ACE reserves the right to alter any specifications without prior notice. Dimensions, weights & capacities mentioned herein are variable by ± 5%. Accessories if shown are not part of the Standard Equipment.