

ACE

FX250

NextGen Hydraulic Crane Capacity : 25 tonnes

Rough terrain and rugged
articulated new generation pick n move crane.



- Front outriggers
- Heavy duty drive line
- Front mounted ergonomically designed Cabin
- Improved kinematics with low Center of Gravity
- Slotted boom
- Self Adjusting hook block
- Fail safe air brakes

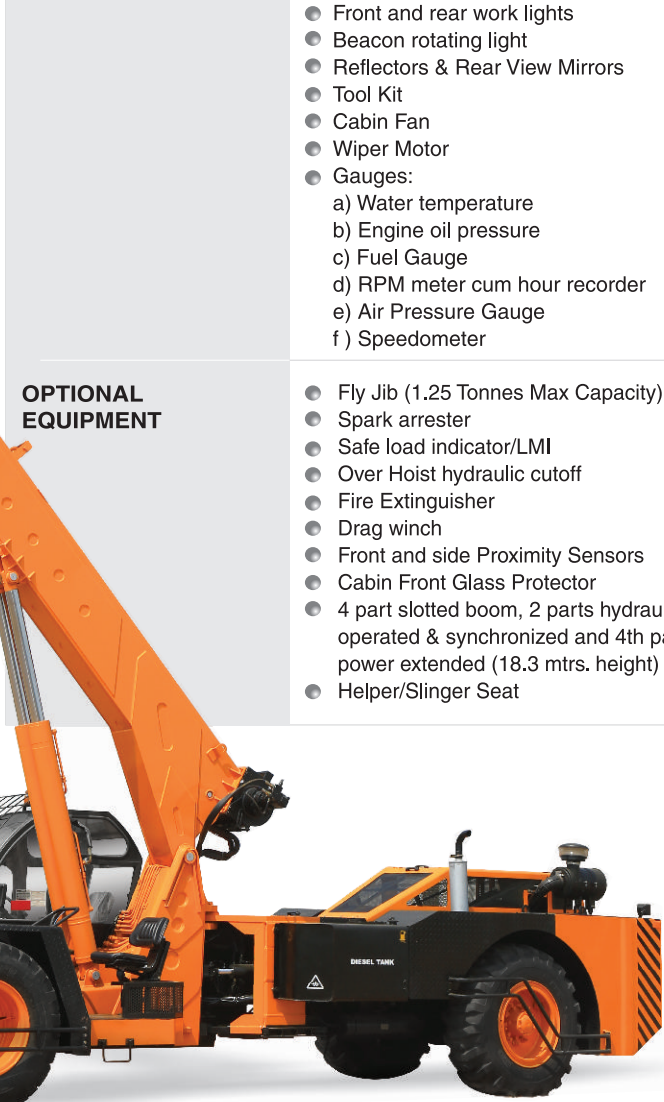
*Nothing beats an **ACE***



Specifications

FX250

LIFTING CAPACITY (Free on wheels)	25 Tonnes
ENGINE	Ashok Leyland, 6 cylinder, water cooled diesel engine or equivalent
Rated Power	133 HP at 2300 RPM
TRANSMISSION	Heavy duty, Synchromesh with 8 forward and 2 reverse speeds and hi-low drive selector for creep speed
Axles	Front axle is rigidly mounted on the chassis and rear drive axle is mounted with 2 nos. leaf springs
Clutch	Heavy duty hydraulic clutch
Top Speed	35 KMPH on even metaled road (without load)
Gradeability	36% (unladen)
HYDRAULIC SYSTEM	<ul style="list-style-type: none"> ● Gear/Intra Vane type Main Pump ● Five spools control valve with built in Reliefvalve (Heavy Duty) ● Suction line has 100 mesh size Strainer while return line is fitted with 25 micron full flow filter. ● Two double acting lift cylinders, one double acting steering cylinder, one double acting extension cylinder and two double acting outrigger cylinders
STEERING	Full power orbitrol with twin hydraulic double acting cylinders and 40° articulation on either side.
Turning Radius	8.2 Meters (approx)
TYRES	
Front	12.00 x 24 - 20 PR (4 Nos.)
Rear	17.50 x 25 - 20 PR (2 Nos.)
Wheel base	5100 mm
Wheel track	Front 1900 mm Rear 1770 mm
BRAKES	<ul style="list-style-type: none"> ● Dual Circuit Brakes ● Fully pneumatic brakes on front and rear wheels ● Parking brake is pneumatically operated, fail safe type.
ELECTRICAL SYSTEM	24 V Negative earth
TELESCOPIC BOOM	Three part slotted boom with hydraulically operated synchronized extensions (12 mtrs. height)

HOIST	Winch is driven by hydraulic motor and fitted with rope tensioner. Hoisting is provided through self adjusting hook block employing 6 falls of 13 mm dia steel core anti twist rope.
Hoist Speed	50 Mtrs./Min. (Line speed)
BOOM LUFFING	
Range	-3° to + 66°
SAFETY	<ul style="list-style-type: none"> ● Hose failure protection ● Audio over hoisting indication ● Safety brakes on hoist ● Self adjusting hook block ● Front and rear wheel guards
STANDARD EQUIPMENT	<ul style="list-style-type: none"> ● Front Outriggers ● Front mounted fully enclosed wide view cabin ● Rear View Camera ● Front and rear work lights ● Beacon rotating light ● Reflectors & Rear View Mirrors ● Tool Kit ● Cabin Fan ● Wiper Motor ● Gauges: <ul style="list-style-type: none"> a) Water temperature b) Engine oil pressure c) Fuel Gauge d) RPM meter cum hour recorder e) Air Pressure Gauge f) Speedometer
OPTIONAL EQUIPMENT	<ul style="list-style-type: none"> ● Fly Jib (1.25 Tonnes Max Capacity) ● Spark arrester ● Safe load indicator/LMI ● Over Hoist hydraulic cutoff ● Fire Extinguisher ● Drag winch ● Front and side Proximity Sensors ● Cabin Front Glass Protector ● 4 part slotted boom, 2 parts hydraulically operated & synchronized and 4th part power extended (18.3 mtrs. height) ● Helper/Slinger Seat
	
OPTIMIZED KINEMATICS AND LOW C.G. FX 250 crane has been evolved/designed keeping in mind operational safety parameters with low Center of Gravity (C.G.) providing best in class stability.	
OPERATING WEIGHT	
Front Axle	10000 Kgs.
Rear Axle	10200 Kgs.
Total Weight	20200 Kgs.



- 1 INCREASED VISIBILITY**
Bigger size front windscreen provided for better visibility and safe operation.



- 4 OUT TRIGGERS**
Front outriggers are provided as standard fitment for added safety during high lift operations.

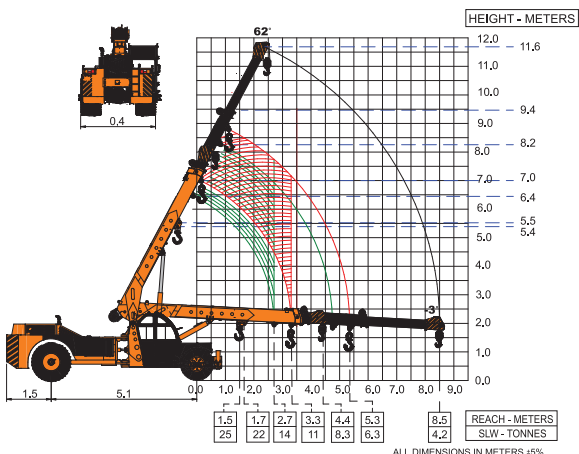


- 7 DRAG WINCH**
Optionally Drag Winch is available for pulling & tugging applications



- 10 CABIN**
Front mounted, ergonomically designed Cabin for better visibility and driveability.

ACE FX250 Model Crane fitted with 3 part slotted boom (11.6 Mtrs. height)



- 2 EASY MAINTENANCE**
The engine is easily accessible for daily maintenance checks including battery, air filter, oil level dipstick and cooling system.



- 5 GROUND CLEARANCE**
Ground clearance of 300mm for easier rough terrain operation.



- 8 SLOTTED BOOM**
Facilitates easier load positioning and fitted with self adjusting hook block.



- 3 HYDRAULIC & FUEL TANK**
Easy approach and adequate capacities



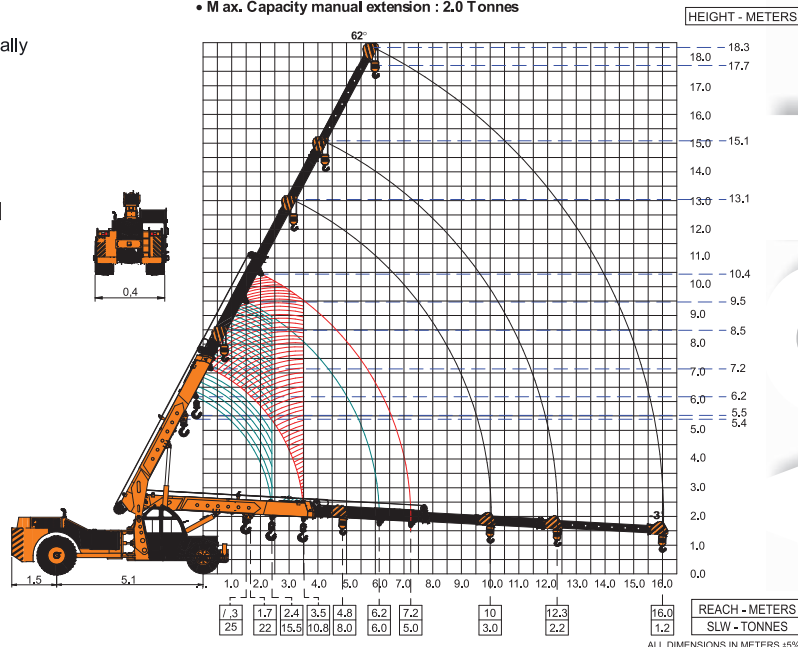
- 6 STEERING WHEEL & CONTROLS**
Steering wheel is provided as a standard feature, which along with ergonomically placed operator console and instrument cluster ensures ease of operation.



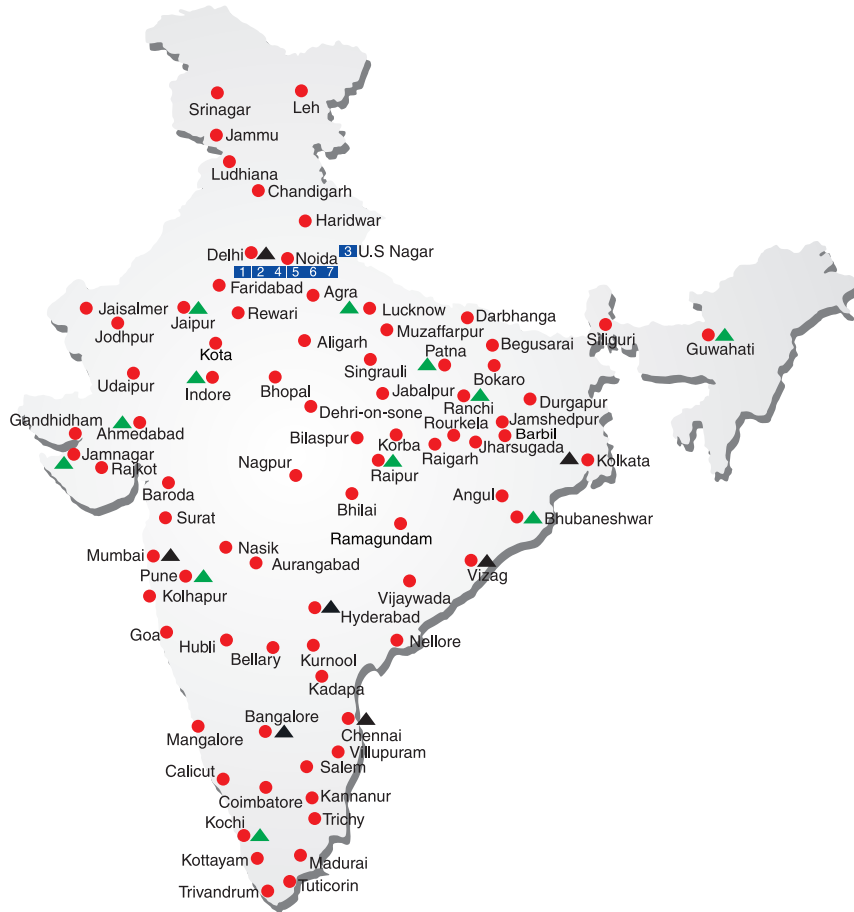
- 9 ENGINE**
Best in class Ashok Leyland 6 Cylinder engine having nationwide service support and spare parts availability.

ACE FX250 Crane fitted with 3 part slotted boom + 1 Manual (18.3 Mtrs. height)

- Max. Capacity Fly jib : 1.25 Tonnes
- Max. Capacity manual extension : 2.0 Tonnes



ALL INDIA NETWORK



CUSTOMER CARE

TOLL FREE No

1800 1800 004

- WORKS
- ▲ REGIONAL OFFICES
- ▲ AREA OFFICES
- SALES AND SERVICE DEALERS



MARKETING H.Q.

4th Floor, Pinnacle, Surajkund, NCR-121009
Ph.: +91-129-4550000, Fax: +91-129-4550022
E-mail: marketing@ace-cranes.com

REGISTERED OFFICE

Dudhola Link Road, Dudhola, Palwal-121102, Haryana
Ph.: +91-1275-280111, Fax: +91-1275-280133
CIN : L74899HR1995PLC053860

MUMBAI OFFICE

31, "Kalpataru Court", Chembur, Mumbai - 400074
Ph.: +91-22-25206846, 25207070, Fax: +91-22-25207071
E-mail: acemumbai@ace-cranes.com

KOLKATA OFFICE

"Forma Towers" 84-A, Second Floor, AJC Bose Road,
Kolkata - 700014, Ph.: +91-9038070630
E-mail: acekolkata@ace-cranes.com

CHENNAI OFFICE

1st Floor, "Alsa Regency", 165, Eldams Road,
Alwar Pet, Chennai - 600018
Ph.: +91-44-24314253, Fax: +91-44-24314252
E-mail: acechennai@ace-cranes.com



Action Construction Equipment Ltd.

Contact:



ACE reserves the right to alter any specifications without prior notice. Dimensions, weights & capacities mentioned herein are variable by $\pm 5\%$. Accessories if shown are not part of the Standard Equipment.

