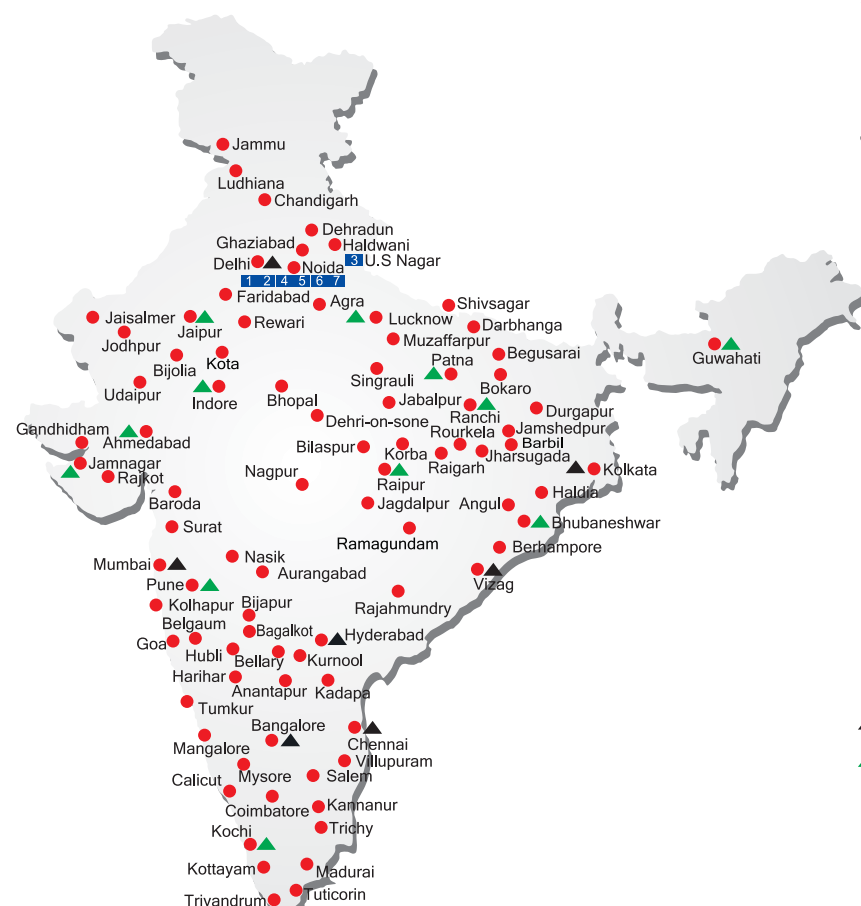


## ALL INDIA NETWORK



### SPARE PARTS & SERVICE

ACE has all India Sales and Service network operating out of all the major cities. These outlets are fully equipped to provide genuine spare parts and services by company trained engineers. These outlets are further supported by company officials based at Delhi, Mumbai, Chennai, Kolkatta, Ahmedabad, Surat, Pune, Jaipur, Chandigarh, Ranchi, Raipur, Indore, Bhubneshwar, Lucknow, Jamnagar, Hyderabad, Bangalore, Guwahati, Patna, Vizag & Cochin.

### CUSTOMER CARE

TOLL FREE No

**1800 1800 004**

- WORKS
- ▲ REGIONAL OFFICES
- ▲ AREA OFFICES
- SALES AND SERVICE DEALERS

### MARKETING H.Q.

4th Floor, Pinnacle, Suraj Kund, NCR-121009,  
Ph.: 0129-4550000 (100 Lines)  
E-mail: marketing@ace-cranes.com

### REGISTERED OFFICE

Dudhola Link Road, Dudhola, Palwal-121102, Haryana  
Ph.: +91-1275-280111, Fax: +91-1275-280133  
CIN : L74899HR1995PLC053860

### MUMBAI OFFICE

31, "Kalpataru Court", Chembur, Mumbai - 74  
Ph.: +91-22-25206846, 25207070, Telefax: 25207071  
E-mail: acemumbai@ace-cranes.com

### KOLKATA OFFICE

"Forma Towers" 84-A, Second Floor, AJC Bose Road,  
Kolkata - 14, Ph.: +91-33-65012050  
E-mail: acekolkata@ace-cranes.com

### CHENNAI OFFICE

1st Floor, "Alsa Regency", 165, Eldams Road,  
Alwar Pet, Chennai - 18  
Ph.: +91-44-24314253, Telefax: 24314252  
E-mail: acechennai@ace-cranes.com



# ACE

**Action Construction Equipment Ltd.**

Contact:



ACE reserves the right to alter any specifications without prior notice. Dimensions, weights & capacities mentioned herein are variable by ± 5%. Accessories if shown are not part of the Standard Equipment.



[www.ace-cranes.com](http://www.ace-cranes.com)

# ACE

# Rhino 1100C

## Hydraulic Mobile Crane

Rough terrain and rugged articulated pick n move crane

**ACE** INDIA'S NO. 1  
MOBILE & TOWER CRANE CO.



*Nothing beats an **ACE***



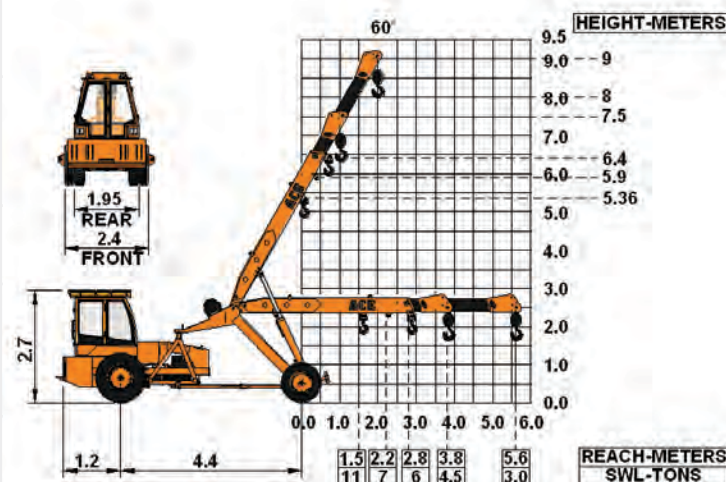


## Specifications

## Rhino 110 C

LIFTING CAPACITY (Free on wheels)	11 Tonnes
ENGINE	Simpson's S433(I) F1 (CEV BS-III), 4 cylinder, water cooled diesel engine OR suitable equivalent engine
Rated Power	48 BHP (36KW) at 2200 RPM
TRANSMISSION	Sliding mesh with 6 forward and 2 reverse speeds and high low range selector.
Clutch	Single, dry friction clutch plate.
Top Speed	29 KMPH without load.
STEERING	Hydraulically operated with 55° articulation on either side and turning radius of 5.5 Mtrs. (approx) on outer rear wheels.
BRAKES	Pneumatically assisted hydraulic brakes. Front and rear brakes are actuated through a single pedal. Parking brake is Provided.
HYDRAULIC SYSTEM	<ul style="list-style-type: none"> <li>● Gear/Intra vane type main pump.</li> <li>● Four spools control valve.</li> <li>● Suction line has 100 mesh size strainer while return line is fitted with 25 micron full flow filter.</li> <li>● Two double acting lift cylinders, two double acting steering cylinders and one double acting extension cylinder.</li> </ul>
TELESCOPIC BOOM	Two part boom with hydraulically operated extension of 1800 mm stroke.
Telescoping Time	10 Seconds.
BOOM LUFFING	
Range	-5° to + 60°
Time	20 Seconds.
HOIST	Winch is driven by hydraulic motor employing 4 falls of 13 mm dia rope.
Hoist Speed	50 Mtrs./Min. (Line speed)
ELECTRICAL SYSTEM	12V. Negative earth with 35 Amp. alternator and 75 Amp hr. battery.
TYRES	
Front	11.00 x 20 - 16PR (4 Nos.)
Rear	13.00 x 24 - 12PR (2 Nos.)
FLUID CAPACITIES	
Air Cleaner	0.75 Ltrs.
Engine	8.00 Ltrs.
Fuel Tank	45.00 Ltrs.
Hydraulic Tank	100.00 Ltrs.
Transmission	37.00 Ltrs.

SAFETY	<ul style="list-style-type: none"> <li>● Audio overload indication.</li> <li>● Hose failure protection.</li> <li>● Audio over hoisting indication.</li> <li>● Safety brakes on hoist.</li> <li>● Cylinder guards.</li> </ul>
STANDARD EQUIPMENT	<ul style="list-style-type: none"> <li>● ROPS fully enclosed wide view cabin.</li> <li>● Front tyre protector.</li> <li>● Front and rear work lights.</li> <li>● Reflectors.</li> <li>● Tool kit.</li> <li>● Gauges :- a) Water Temperature. b) Engine oil pressure. c) RPM meter cum hour recorder</li> </ul>
OPTIONAL EQUIPMENT	<ul style="list-style-type: none"> <li>● Fly jib.</li> <li>● Steering wheel.</li> <li>● Slotted boom.</li> <li>● Spark arrester.</li> <li>● Over hoisting hydraulic cut off.</li> <li>● Safe load indicator / LMI.</li> <li>● City type double driving cabin.</li> <li>● Front mounted cabin.</li> </ul>
VARIANT MODELS	<ul style="list-style-type: none"> <li>● Rhino 110 (2300mm extension stroke).</li> <li>● Rhino 110 T (without winch).</li> </ul>
OPERATING WEIGHT	8150 kgs.



1

**CONTROL PANEL**  
Well laid out and ergonomically placed  
controls and instrument cluster ensure  
ease of operation.



4

**TRAVEL SPEED**  
Travel speed of 29 kmph provides  
faster intersite movements.

2

**ROPS CABIN**  
Wide view ROPS cabin with curved  
windscreen for better visibility.



3

**LIFTING HEIGHT**  
Higher lifting height of 9 mtrs.



5

**GROUND CLEARANCE**  
High ground clearance of 400mm  
for easier rough terrain operation.



6

**MAIN FRAME**  
Heavy duty & robust construction.



7

**LIFTING CAPACITY**  
Higher lifting capacity of 11 Tonne.



8

**TURNING RADIUS**  
Lower turning radius of 5.5 mtrs.  
facilitates better maneuverability and  
movement in confined spaces.



9

**INCREASED VISIBILITY**  
Bigger size front windscreen  
and re-routing of hoses provide  
much better front visibility.



10

**FULL LENGTH CHASSIS**  
Provides better support to the power  
train leading to increased stability.



See us at ACE