

ACE

SX120

Nextgen Hydraulic Mobile Crane

Rough terrain and rugged
articulated pick n move crane.

- Air brakes
- Slotted boom
- Self Adjusting hook block
- Ergonomically designed front mounted cabin
- Improved kinematics
- Better visibility
- Better creep speed

ACE **INDIA'S NO. 1**
MOBILE & TOWER CRANE CO.



*Nothing beats an **ACE***

Specifications

SX120

LIFTING CAPACITY (Free on wheels)	12 Tonnes	HYDRAULIC SYSTEM	<ul style="list-style-type: none"> ● Gear / Intra Vane type Main Pump. ● Three spools control valve with built in Relief valve. ● Suction line has 100 mesh size Strainer while return line is fitted with 25 micron full flow filter. ● Two double acting lift cylinders, two double acting steering cylinders and one double acting extension cylinder.
ENGINE	KOEL/ACE Water Cooled Diesel Engine	TRANSMISSION	Heavy Duty, sliding mesh with 6 forward and 2 reverse speeds with high low range selector.
Rated Power	49.5 BHP at 2200 RPM	Clutch	Hydraulically operated, heavy duty, dry friction cera-metallic clutch plate with diaphragm type pressure plate.
ELECTRICAL SYSTEM	12V, Negative earth with 35 Amp. Alternator and 75 Amp. Battery	Top Speed	29 KMPH Without load
STEERING	Power steering through orbitrol with twin hydraulic double acting cylinders having 45° articulation on either side .	BOOM LUFFING	
BRAKES		Range	-3° TO + 63°
Service	<ul style="list-style-type: none"> ● Fully air operated S Cam dual brakes on front wheels and air operated disc brakes on rear wheels. Brakes are actuated through a single pedal. 	Time	Lowering : 14~16 Seconds Raising : 21~24 Seconds
Parking	<ul style="list-style-type: none"> ● Air operated spring actuated fail safe type. 		



- 1 CABIN**
Front mounted, ergonomically designed spacious Cabin for better visibility & driveability.



- 2 STABLE DESIGN**
3 Point Oscillation Joint provides for safer and stable operation.



- 4 EASY MAINTENANCE**
The engine is easily accessible for daily maintenance checks including battery, air filter, oil level and cooling system



- 3 INCREASED VISIBILITY**
Bigger size front windscreen provided for better visibility and safe operation.



- 5 SLOTTED BOOM**
Facilitates easier load positioning & fitted with self adjusting hook block.



NOTE : • All above specifications are pertaining to SX120 model fitted with 11.0 Mtrs. boom.
• Rated loads are on the basis of operation on firm and level surface..

Specifications

SX120

TELESCOPIC BOOM	Three part slotted boom with hydraulically operated synchronized extensions (11.0 mtrs height).
Telescoping Timing	In : 6~9 Seconds Out : 13~16 Seconds
FLUID CAPACITIES	
Engine	8.00 Ltrs.
Fuel Tank	120.00 Ltrs
Hydraulic Tank	100.00 Ltrs.
Transmission	37.00 Ltrs.
TYRES	
Front	11.00 x 20 – 16 PR (4 Nos.)
Rear	13.00 x 24 – 12 PR (2 Nos.)
SAFETY	<ul style="list-style-type: none"> Hose failure protection. Audio over hoisting indication Safety brakes on hoist. Self-adjusting hook block. Front and rear wheel guard(s)
HOIST	Winch is driven by hydraulic motor and fitted with self adjusting hook block employing 4 falls of 13mm dia. Rope.
Hoist Speed	50 Mtrs./Min. (Line Speed)

STANDARD EQUIPMENT

- ROPS fully enclosed wide view front mounted cabin
- Rear View Camera
- Front and Rear work lights
- Reflectors and rear view mirror
- Tool kit
- Cabin Fan
- Gauges :-
 - a) Water temperature
 - b) Engine oil pressure
 - c) Fuel Gauge
 - d) RPM meter cum hour recorder
 - e) Air pressure

OPTIONAL EQUIPMENT

- Fly jib (Max. Capacity : 1.25 tonnes)
- Spark arrestor
- Safe load indicator/ LMI
- Over Hoist hydraulic cutoff
- Fire extinguisher
- Beacon rotating light
- Front and side proximity sensors
- Cabin front glass protector
- Helper/Slinger seat
- 3 Part slotted boom (12.6 mtrs height)

OPERATING WEIGHT

13300 Kgs



- 6 STEERING WHEEL & CONTROLS**
Steering wheel is provided as a standard feature, which along with ergonomically placed operator console and instrument cluster ensures ease of operation.

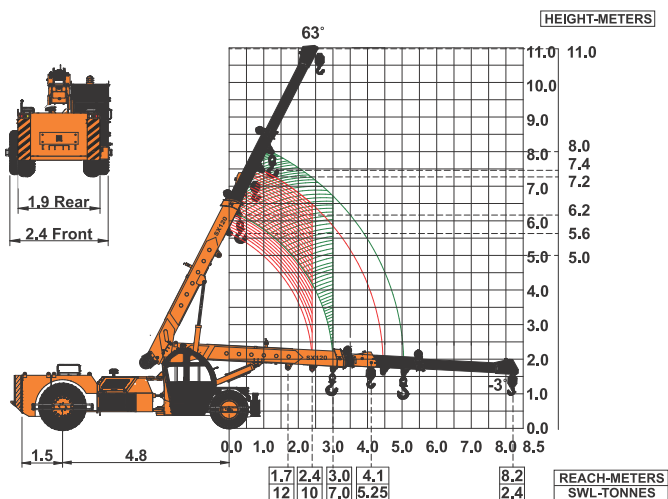
- 7 REAR DECK**
Spacious & well laid out rear deck for storing lifting tackles etc. and provides ample space for slingers/helpers.

- 8 OPTIMIZED KINEMATICS AND LOW C.G.**
SX120 crane has been designed keeping in mind operational safety parameters with low Center of Gravity (C.G.) providing best in class stability.

- 9 GROUND CLEARANCE**
Ground clearance of 300mm facilitates easier rough terrain operation.

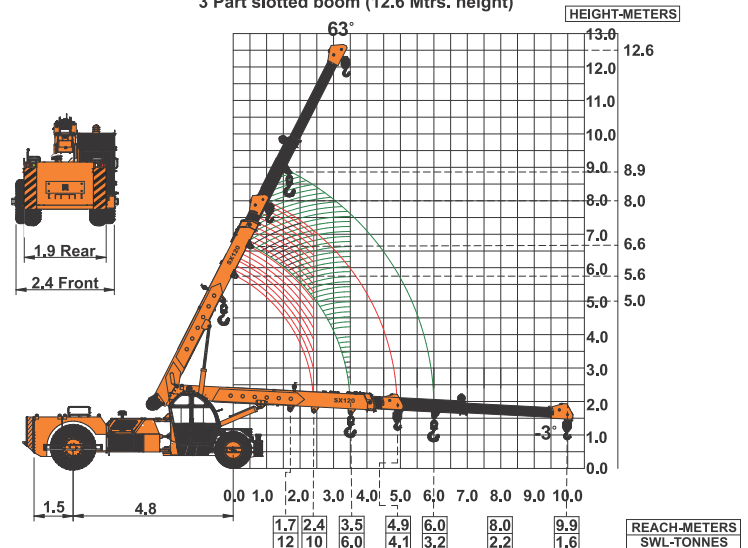
ACE advantages

ACE SX120 Model Crane fitted with 3 Part slotted boom (11.0 Mtrs. height)



Full rated lifting capacity available in articulated / steered condition.

ACE SX120 Model Crane fitted with 3 Part slotted boom (12.6 Mtrs. height)



Full rated lifting capacity available in articulated / steered condition.

Map of India showing the locations of 100 cities. The cities are marked with red dots, green triangles, and black triangles. A legend on the right side of the map shows a blue square, a black triangle, and a green triangle. The cities are labeled with their names in English. The map shows the outline of India with its major cities and states. The cities are distributed across the country, with a higher concentration in the eastern and southern regions. The legend indicates that the blue square represents a specific category, the black triangle represents another, and the green triangle represents a third. The red dots represent the remaining cities.

ACE has all India Sales and Service network operating out of all the major cities. These outlets are fully equipped to provide genuine spare parts and services by company trained engineers. These outlets are further supported by company officials based at Delhi, Mumbai, Chennai, Kolkatta, Ahmedabad, Surat, Pune, Jaipur, Chandigarh, Ranchi, Raipur, Indore, Bhubneshwar, Lucknow, Jamnagar, Hyderabad, Bangalore, Guwahati, Patna, Vizag & Cochin.

1800 1800 004

- WORKS
- ▲ REGIONAL OFFICES
- ▲ AREA OFFICES
- SALES AND SERVICE DEALERS

5th Floor, "TDI Center", Jasola, New Delhi - 25
Ph.: +91-11-40549900 (30 Lines), Fax: 40549922
E-mail: marketing@ace-cranes.com, works@ace-cranes.com

Dudhola Link Road, Dudhola, Palwal-121102, Haryana
Ph.: +91-1275-280111 , Fax: +91-1275-280133
CIN : L74899HR1995PLC053860

31, "Kalpataru Court", Chembur, Mumbai - 74
Ph.: +91-22-25206846, 25207070, Telefax: 25207071
E-mail: acemumbai@ace-cranes.com

“Forma Towers” 84-A, Second Floor, AJC Bose Road,
Kolkata - 14. Ph.: +91-33-65012050
E-mail: acekolkatta@ace-cranes.com

1st Floor, "Alsa Regency", 165, Eldams Road,
Alwar Pet, Chennai - 18
Ph.: +91-44-24314253, Telefax: 24314252
E-mail: acechennai@ace-cranes.com



ACE

Action Construction Equipment Ltd.

Contact:



ACE reserves the right to alter any specifications without prior notice. Dimensions, weights & capacities mentioned herein are variable by $\pm 5\%$. Accessories if shown are not part of the Standard Equipment.

